



# Community Safety Update 2013

Safer and Stronger Communities Scrutiny Committee

28 March 2013

Paul McCurry, Head of Community Safety



## Background

- The Safer and Sustainable Communities Partnership is responsible for tackling crime, anti-social behaviour and drug and alcohol misuse, and promoting community cohesion, community involvement and volunteering
- The SSCP provides an environment for public, voluntary and private sector partners to work together to build safe and sustainable communities



# Police and Crime Commissioner

- Police Authorities no longer exist
- Came into place Nov 2012 – Shaun Wright
- Aims to bring the voice of the people into policing and be accountable for it
- Holds the police force and community safety partners to account
- Sets the Council Tax precept



## Police and Crime Panels (PCP)

- Established in each force area to provide regular public scrutiny of the PCC
- PCP is formed by all local authorities in a force area
- The Members for Sheffield are: Cllr Hary Harpham, Cllr Helen Mirfin-Boukouris, Cllr Talib Hussain, Cllr Sylvia Anginotti



# Partnerships Strategic Priorities

- Reducing anti-social behaviour and low level offending
- Working to create sustainable and cohesive communities
- Tackling substance and alcohol misuse
- Protecting the most vulnerable



## Joint Strategic Intelligence Assessment (JSIA)

- An overview of crime, disorder and substance misuse in Sheffield
- Includes sustainable communities issues
- Looks at current, new and long-term issues
- Produced annually
- Informs the priorities for the Partnership and Plan 2013
- All partners contribute data and other relevant information to the process



## JSIA Priorities 2012

- Domestic Burglary
- Shoplifting and metal theft
- Alcohol and drugs
- Youth Offending
- Burngreave Ward
- Central Ward
- Darnall Ward



# Partnership Plan Priorities 2013

- To reduce anti-social behaviour, damage and low-level offending
- To help create sustainable and cohesive communities
- To reduce violent crime by tackling substance misuse
- To protect the most vulnerable
- To support Young adults
- To increase public confidence
- To introduce a whole household approach to community safety





# Performance

- Quarterly reports to 2 Performance Managements Frameworks
  - SSCP's
  - Community Services Service Plan
- Both cover headline indicators on main priority themes measured against a baseline
- Partnership activity refocused when performance declines



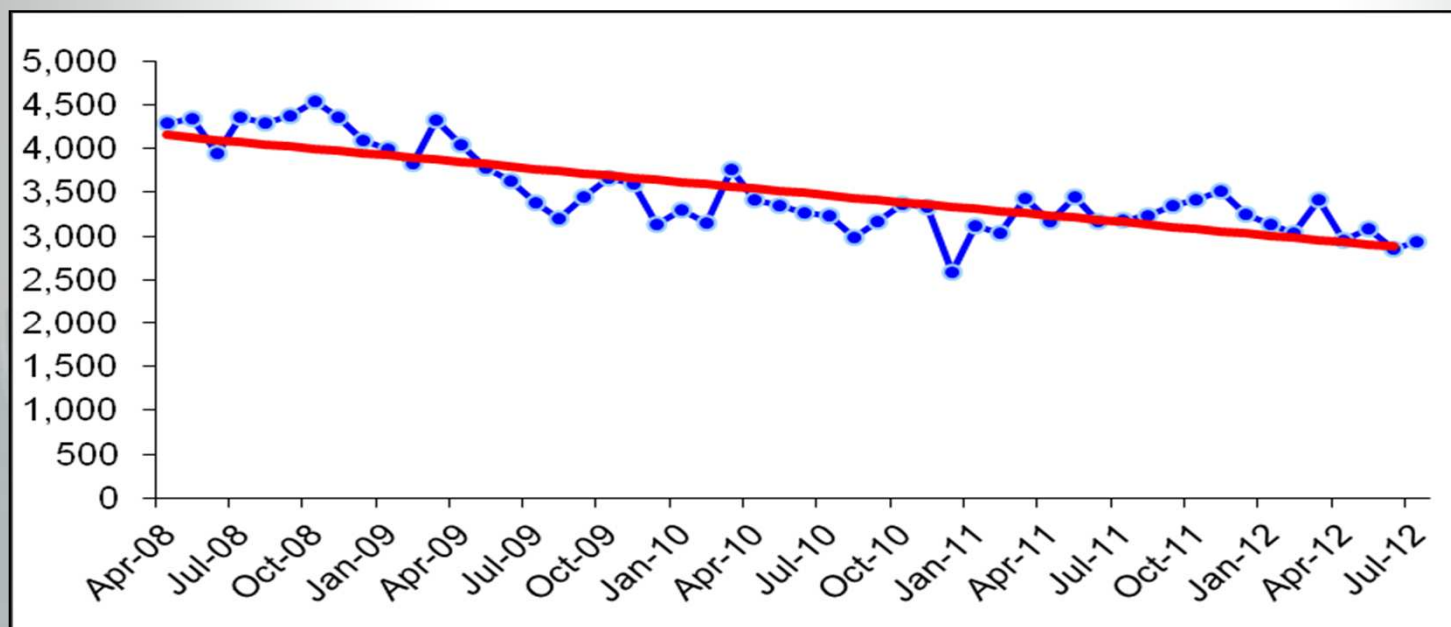
## Performance

- ASB down showing a 13% reduction compared to 11/12
- Hate Crime – levels of reporting showing an increase with positive increases in levels of disability Hate Crime reporting linked to work currently being undertaken
- Burglary showing an increase of 2%. Targeted actions being taken to address



# Performance

- **Victim-based crime in Sheffield April 2008 – Jul 12**





# Achievements

## Ending Gang & Youth Violence (EGVY)

- Programme & Commissioning group established to provide multi agency strategic oversight and monitoring Sheffield Gangs Strategy 2012-15
- Network of 27 VCF groups established and supported with small grants to develop new innovative ways to address gang and youth violence
- SCC & SYP media strategy developed



# Achievements

## Domestic Violence

- Greater awareness of services means reporting is rising
- Overall levels of domestic violence continue to fall
- Continued development of domestic and sexual abuse services
- Increased referrals to the services from agencies
- SCC Community Services are committed to providing £216,000 funding for 13/14 to sustain the service
- First Domestic Homicide Review approved for publication in the country



# Achievements

## Partnership Resource Allocation Meeting (PRAM)

- provides a forum for ensuring that the most vulnerable people experiencing ASB are identified and receive appropriate support;
- provides a means for concentrating agency resources on risk and vulnerability as well as focussing agencies on working together following the Pilkington case;
- provides an evidence based link into Vulnerable Adults Panel



# Achievements

## Community Justice Panels (CJPS)

- Currently 42 Volunteer Case-Workers, aged from 18yrs to 72yrs, from all backgrounds and areas of Sheffield and representative of the diverse population
- South Yorkshire Police, Sheffield Homes and other registered social landlords refer to The Community Justice Team
- To date nearly 600 referrals ranging from; noise nuisance, boundary and access disputes, theft, assault, hate-crime and criminal damage
- 2012 study found 98.8% of all participants referred said they were “highly satisfied” with the service they received





# Achievements

## Hate Crime reporting centre at First Point







# Budget

- Most community safety work takes place through mainstream budgets of all partners
- The Council and Police and Crime Commissioner contribute to a discretionary budget for the Partnership to allocate





# Challenges

- PRAM – current pilot to go city wide
- Burglary – further investment
- Addressing vulnerability
- Mental health
- Ending gang and youth violence – sustaining the work
- Sexual exploitation



# Going Forward

- ASB – changes
- Successful families
- Cohesion and migration
- Service changes in light of reduced budget
- Risk management

This page is intentionally left blank